

Age-Dependent Effects of Methylphenidate on the Human Dopaminergic System in Young vs Adult Patients With Attention-Deficit/Hyperactivity Disorder

A Randomized Clinical Trial

Anouk Schrantee, MSc; Hyke G. H. Tamminga, MSc; Cheima Bouziane, MSc; Marco A. Bottelier, MD; Esther E. Bron, MSc; Henk-Jan M. M. Mutsaerts, MD, PhD; Aeilko H. Zwinderman, PhD; Inge R. Grootte, PhD; Serge A. R. B. Rombouts, PhD; Ramon J. L. Lindauer, MD, PhD; Stefan Klein, PhD; Wiro J. Niessen, PhD; Brent C. Opmeer, PhD; Frits Boer, MD, PhD; Paul J. Lucassen, PhD; Susan L. Andersen, PhD; Hilde M. Geurts, PhD; Liesbeth Reneman, MD, PhD

[+](#) Supplemental content at jamapsychiatry.com

IMPORTANCE Although numerous children receive methylphenidate hydrochloride for the treatment of attention-deficit/hyperactivity disorder (ADHD), little is known about age-dependent and possibly lasting effects of methylphenidate on the human dopaminergic system.

OBJECTIVES To determine whether the effects of methylphenidate on the dopaminergic system are modified by age and to test the hypothesis that methylphenidate treatment of young but not adult patients with ADHD induces lasting effects on the cerebral blood flow response to dopamine challenge, a noninvasive probe for dopamine function.

DESIGN, SETTING, AND PARTICIPANTS A randomized, double-blind, placebo-controlled trial (Effects of Psychotropic Drugs on Developing Brain–Methylphenidate) among ADHD referral centers in the greater Amsterdam area in the Netherlands between June 1, 2011, and June 15, 2015. Additional inclusion criteria were male sex, age 10 to 12 years or 23 to 40 years, and stimulant treatment-naïve status.

INTERVENTIONS Treatment with either methylphenidate or a matched placebo for 16 weeks.

MAIN OUTCOMES AND MEASURES Change in the cerebral blood flow response to an acute challenge with methylphenidate, noninvasively assessed using pharmacological magnetic resonance imaging, between baseline and 1 week after treatment. Data were analyzed using intent-to-treat analyses.

RESULTS Among 131 individuals screened for eligibility, 99 patients met *DSM-IV* criteria for ADHD, and 50 participants were randomized to receive methylphenidate and 49 to placebo. Sixteen weeks of methylphenidate treatment increased the cerebral blood flow response to methylphenidate within the thalamus (mean difference, 6.5; 95% CI, 0.4–12.6; $P = .04$) of children aged 10 to 12 years old but not in adults or in the placebo group. In the striatum, the methylphenidate condition differed significantly from placebo in children but not in adults (mean difference, 7.7; 95% CI, 0.7–14.8; $P = .03$).

CONCLUSIONS AND RELEVANCE We confirm preclinical data and demonstrate age-dependent effects of methylphenidate treatment on human extracellular dopamine striatal-thalamic circuitry. Given its societal relevance, these data warrant replication in larger groups with longer follow-up.

TRIAL REGISTRATION identifier: [NL34509.000.10](https://doi.org/10.1186/1745-6215-10-100010) and trialregister.nl identifier: [NTR3103](https://doi.org/10.1186/1745-6215-10-100010).

JAMA Psychiatry. doi:10.1001/jamapsychiatry.2016.1572
Published online August 3, 2016.

Author Affiliations: Author affiliations are listed at the end of this article.

Corresponding Author: Liesbeth Reneman, MD, PhD, Department of Radiology Academic Medical Center, University of Amsterdam, Room G1-222, Meibergdreef 9, 1105 AZ Amsterdam, the Netherlands (l.reneman@amc.uva.nl).

Methylphenidate hydrochloride is the most frequently prescribed medication for the treatment of attention-deficit/hyperactivity disorder (ADHD). It effectively reduces symptoms of inattention, hyperactivity, and impulsivity in up to 80% of children with ADHD.¹ Methylphenidate increases extracellular dopamine (DA) levels in the brain by blocking the DA transporters in the synapse.² Its short-term safety has been documented in many studies, and its efficacy is among the highest of all psychiatric medications.³ However, despite its prevalent use among children and adolescents, little is known about lasting effects of methylphenidate on the developing DAergic system.³⁻⁵

The adolescent brain is a rapidly developing system that maintains high levels of plasticity. As such, the brain may be particularly vulnerable to drugs that interfere with these processes or modify the specific transmitter systems involved. The effects of methylphenidate on brain development have so far only been studied in healthy male animals,^{4,6} with short washout periods.⁷ More recent evidence indicates that psychotropic drugs affect the brain in a differential manner that depends on the age at exposure.⁵ Whereas long-term stimulant exposure in adult animals results in a temporary adaptation to the drug effects, more lasting (and sometimes permanent) alterations are seen when methylphenidate is administered to juvenile animals, a process referred to as *neurochemical imprinting*.⁵

Safety investigations on the effects of methylphenidate on DA function in the developing brain are scarce in children.⁷ Regardless of this alarming paucity of findings, increasingly greater numbers of children and young adolescents are exposed to methylphenidate, many of whom likely do not meet the criteria for ADHD.⁸ This heightened use has led to considerable debate and concern (eg, among parents) about the long-term consequences or possible adverse effects of methylphenidate use in children. Such knowledge is urgently needed, as recently emphasized by several entities, including the US Food and Drug Administration⁹ and National Institutes of Health¹⁰ and the European Committee for Medicinal Products for Human Use.¹¹

The primary aim of the Effects of Psychotropic Drugs on Developing Brain-Methylphenidate study was to assess the effects of long-term methylphenidate treatment on DA function in children and adults with ADHD. We probed DA function using methylphenidate-based pharmacological magnetic resonance imaging (phMRI), a powerful noninvasive technique to investigate DA function in vivo.^{12,13} Due to increased DA levels,¹⁴ we hypothesized an increased cerebral blood flow (CBF) response to methylphenidate in children treated with methylphenidate for 4 months (with a 1-week washout) but no such lasting effects in methylphenidate-treated adults.

Methods

Trial Design

The Effects of Psychotropic Drugs on Developing Brain-Methylphenidate¹⁵ study was a 16-week double-blind, randomized, placebo-controlled, multicenter trial of the use

Key Points

Question Are the effects of methylphenidate hydrochloride on the dopaminergic system in patients with attention-deficit/hyperactivity disorder modified by age?

Findings In a randomized clinical trial of 99 male patients with attention-deficit/hyperactivity disorder, 4 months of methylphenidate treatment induced enduring effects in the cerebral blood flow response to an acute challenge with methylphenidate (a noninvasive probe for dopamine function) in children but not in adults.

Meaning Methylphenidate has a different effect on the developing dopaminergic system compared with the matured dopaminergic system.

of methylphenidate and a blinded end point evaluation in stimulant treatment-naïve patients with ADHD. The effect of age on the CBF response to a DA challenge and overall clinical outcome was assessed using phMRI in children and adults with ADHD, randomly assigned to either placebo or active treatment with methylphenidate, at baseline and after a 1-week washout (eFigure 1 in Supplement 1). The trial protocol applied the code of medical ethics and was registered by the Central Committee on Research Involving Human Subjects (an independent registry) on March 24, 2011 (identifier NL34509.000.10) and subsequently at The Netherlands National Trial Register (identifier NTR3103), with enrollment of the first patient on October 13, 2011. In addition, the institutional review board of the Academic Medical Center approved the study. The full protocol is available in Supplement 2. The trial ended on June 15, 2015, and was monitored by the Clinical Research Unit of the Academic Medical Center, University of Amsterdam, Amsterdam, the Netherlands.

All patients and parents or legal representatives of the children provided written informed consent.

Participants

Participants were 50 stimulant treatment-naïve boys (10-12 years old) and 49 stimulant treatment-naïve men (23-40 years old) diagnosed as having ADHD and recruited through clinical programs at the Department of Child and Adolescent Psychiatry at Triversum (Alkmaar, the Netherlands), De Bascule Academic Center for Child and Adolescent Psychiatry (Amsterdam), and PsyQ mental health facility (The Hague). All children and adults who were included met strict criteria for ADHD according to the *DSM-IV*¹⁶ and were diagnosed by an experienced psychiatrist (M.A.B.), which was confirmed with the *Diagnostic Interview Schedule for Children* (authorized Dutch translation)¹⁷ and the *Diagnostic Interview for ADHD in Adults*.¹⁸ Patients with comorbid Axis I psychiatric disorders requiring treatment with medication at study entry, a history of major neurological or medical illness, or a history of clinical treatment with drugs influencing the DAergic system (for adults before age 23 years), such as stimulants, neuroleptics, antipsychotics, and dopamine 2 and 3 (D₂ and D₃) agonists, were excluded. More detailed inclusion and exclusion criteria are available in the trial protocol (Supplement 2).

Intervention, Randomization, and Blinding

Patients were randomly assigned to either methylphenidate or placebo treatment (eAppendix in Supplement 1). The treating physicians (C.B. and M.A.B.) prescribed the study medication under double-blind conditions on clinical guidance (ie, reduction in ADHD symptoms) in accord with Dutch treatment guidelines. Adult participants received coaching sessions, and parents of children received psychoeducation. Adherence to the study medication was monitored at each of the 5 control visits (weeks 1, 3, 8, and 12 for children and weeks 1, 2, 4, 8, and 12 for adults).

Outcomes

Primary Outcome Measure of DA Function

We used pHMRI to assess the CBF response to the DA challenge with methylphenidate. Pharmacological MRI is based on the principle that neurotransmitter-specific drug challenges evoke changes in neurovascular coupling and resultant changes in brain hemodynamics, such as the CBF.¹⁹ It has been shown to indirectly assess DA dysfunction in a noninvasive manner similar to positron emission tomographic and single-photon emission computed tomographic studies.^{12,13,20,21}

The pHMRI scan consisted of 2 sessions, one before and one 90 minutes after oral administration of 0.5 mg/kg of methylphenidate hydrochloride (with a maximum dose of 20 mg for children and 40 mg for adults) acquired on a 3.0-T MR imaging system (Philips). Heart rate (HR) was determined using a peripheral pulse unit, and carotid flow was measured using 2-dimensional phase-contrast MRI. Pharmacological MRI assessment took place at baseline (week 0) and posttreatment after a 1-week washout (week 17) to ascertain drug clearance (methylphenidate has a half-life of 2-3 hours²²). Arterial spin labeling pHMRI was used to assess the CBF. The means of the CBF values in the gray matter of 3 a priori selected regions of interest (eFigure 2 in Supplement 1) (ie, striatum, thalamus, and anterior cingulate cortex) were used for statistical analysis. These regions of interest were selected because the striatum is rich in DA transporters (the primary target of methylphenidate) and because animal literature has demonstrated large pHMRI effects of early methylphenidate treatment in the thalamus and anterior cingulate cortex.¹⁴ Data acquisition, postprocessing, absolute CBF values, exploratory voxel-based analyses of the CBF maps, HR, and carotid flow are described and shown in detail in the eAppendix and eFigures 3, 4, 5, and 6 in Supplement 1, respectively).

Secondary Outcome Measure of Clinical Assessment

Clinical change was rated using the Clinical Global Impression-Severity and Clinical Global Impression-Improvement²³ scores, both on a 7-point Likert-type scale. Response to treatment was defined as a score of 1 or 2 on the Clinical Global Impression-Improvement (indicating “very much improved” or “much improved”) and compared between groups at trial’s end.

Statistical Analysis

All primary analyses are intent-to-treat, with the significance level set at $P < .05$ (2-sided). To evaluate the effect of methylphenidate on the development of the DAergic system, paired

t tests were used to assess individual change in acute CBF response after a methylphenidate challenge from baseline to posttreatment (Δ i CBF) for all 4 groups separately. The effect of treatment on Δ i CBF within both age groups was assessed using independent t tests. To test the interaction between age and treatment on Δ i CBF, a 2-way analysis of variance (ANOVA) was performed with age and medication group as factors. Missing values for the CBF (3.6% [14 of 392] due to dropout and 10.7% [42 of 392] in total) and clinical assessments (3.6% [14 of 392] due to dropout and 18.9% [74 of 392] in total) were replaced using nearest neighbor interpolation within age and medication group. For baseline characteristics and clinical outcome, a Fisher exact test was used for the analysis of categorical data, with odds ratio as effect size estimate (Clinical Global Impression-Improvement), and t test and ANOVA were used for continuous variables (Clinical Global Impression-Severity and CBF), with normal distributions and partial eta squared (η_p^2) as effect size estimate. Statistical analyses were conducted with a software program (SPSS, version 22; IBM). Sample size calculations are available in the eAppendix in Supplement 1.

Results

Randomization and Baseline Characteristics

Between June 1, 2011, and February 6, 2015, a total of 99 patients with ADHD in 3 Dutch centers were randomized to methylphenidate or placebo treatment. After randomization, one individual disclosed that he had been treated for ADHD with methylphenidate before and was therefore excluded from the statistical analyses. Fifty children and 48 adults were included in the primary analysis (Figure 1), although one individual was included at age 22 years 5 months. Treatment groups did not differ in age, ADHD symptom severity, and clinical impairment (Table 1). No serious adverse events were noted in any of the individuals studied.

Treatment Assignment and Details

Treatment allocation and dropout rates are shown in Figure 1. Owing to unforeseen technical changes to the MRI scanner, 8 adults underwent the posttreatment scan at 8 weeks instead of 17 weeks. The mean treatment duration did not differ between treatment groups in adults ($P = .68$) and children ($P = .73$).

Main Outcome of the CBF Response to Methylphenidate Challenge

Paired t tests indicated a significant increase (mean difference, 6.5; 95% CI, 0.4-12.6; $P = .04$) (Figure 2) in the CBF change from pretreatment to posttreatment in the thalamus of children treated with methylphenidate and nonsignificant differences in the striatum and anterior cingulate cortex (mean difference, 5.7; 95% CI, -0.4 to 11.8; $P = .07$ and mean difference, 5.5; 95% CI, -0.1 to 11.1; $P = .06$, respectively), presumably reflecting increased DA levels. As hypothesized, treatment of adults with methylphenidate did not induce such an effect, nor did placebo treatment in either age group. Further-

Figure 1. Consolidated Standards of Reporting Trials Flow Diagram

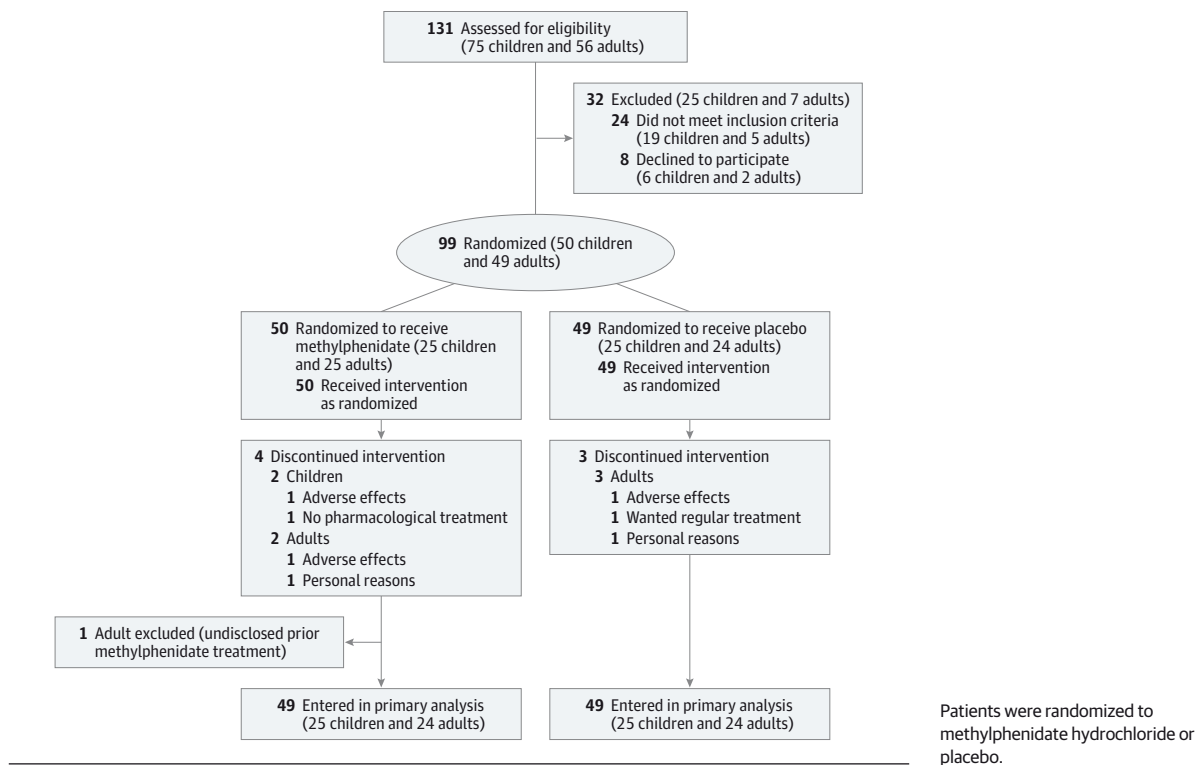


Table 1. Demographics and Characteristics of the Study Participants

Variable	Children		Adults	
	Methylphenidate Hydrochloride n = 25	Placebo n = 25	Methylphenidate Hydrochloride n = 24	Placebo n = 24
Age, mean (SD), y	11.4 (0.8)	11.3 (0.9)	28.6 (4.6)	29.0 (4.9)
Estimated IQ, mean (SD) ^a	104.8 (21.0)	103.4 (15.1)	107.9 (8.8)	107.9 (6.4)
ADHD subtype, No.				
Inattentive	14	14	11	5
Hyperactive/impulsive	0	1	0	0
Combined	11	10	13	19
ADHD symptom score, mean (SD)				
DBD-RS inattention	21.7 (3.2)	22.8 (3.4)	NA	NA
DBD-RS hyperactivity	15.0 (5.0)	16.4 (6.3)	NA	NA
ADHD-RS self-report	NA	NA	30.6 (10.0)	30.4 (9.3)
Clinical impairment score, mean (SD)	4.0 (0.2)	4.0 (0.3)	3.8 (0.5)	3.8 (0.5)
Adherence, mean (SD), %	84 (15)	80 (18)	90 (8)	86 (8)

Abbreviations: ADHD, attention-deficit/hyperactivity disorder; ADHD-RS, ADHD Rating Scale; DBD-RS, Disruptive Behavior Disorder Rating Scale; NA, not applicable.

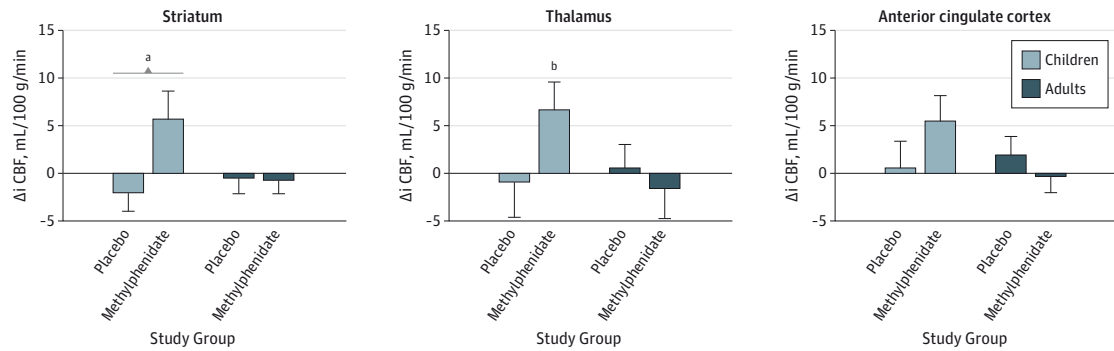
^a For children, the Wechsler Intelligence Scale for Children was used. For adults, the National Adult Reading Test was used.

more, striatal CBF values were also significantly higher (mean difference, 7.7; 95% CI, 0.7-14.8; $P = .03$) in children treated with methylphenidate compared with placebo, whereas no such treatment effect was observed in adults (Table 2). Finally, 2-way ANOVA showed a nonsignificant age \times treatment interaction in the striatum (8.0; 95% CI, -0.3 to 16.3; $P = .06$) ($\eta_p^2 = 0.04$). The difference in response to methylphenidate or placebo treatment in children can also be observed in the difference maps (eFigure 4 in Supplement 1).

Clinical Assessment

A repeated-measures ANOVA showed a significant time \times treatment interaction in children ($P = .01$, $\eta_p^2 = 0.21$) and adults ($P = .02$, $\eta_p^2 = 0.20$) on the Clinical Global Impression-Severity scale (Figure 3), with the methylphenidate groups reporting lower global clinical impairment compared with the placebo groups. The methylphenidate group in children showed more improvement than the placebo group at week 3 ($P = .03$, $\eta_p^2 = 0.09$) and week 8 ($P < .01$, $\eta_p^2 = 0.15$), whereas

Figure 2. Treatment Effects on the Cerebral Blood Flow (CBF) Response to Dopamine Challenge



Shown are the means (SEMs) for the individual change in acute CBF response (Δi CBF) in the placebo and methylphenidate hydrochloride groups.

$\eta_p^2 = 0.09$ (see also Table 2).

^a $P < .05$ by independent t test comparing Δi CBF between the 2 treatment groups in the striatum (mean difference, 7.7; 95% CI, 0.7-14.8; $P = 0.03$,

^b $P < .05$ by paired t test comparing pretreatment to posttreatment Δi CBF within each group in the thalamus (mean difference, 6.5; 95% CI, 0.4-12.6; $P = 0.04$, $\eta_p^2 = 0.17$).

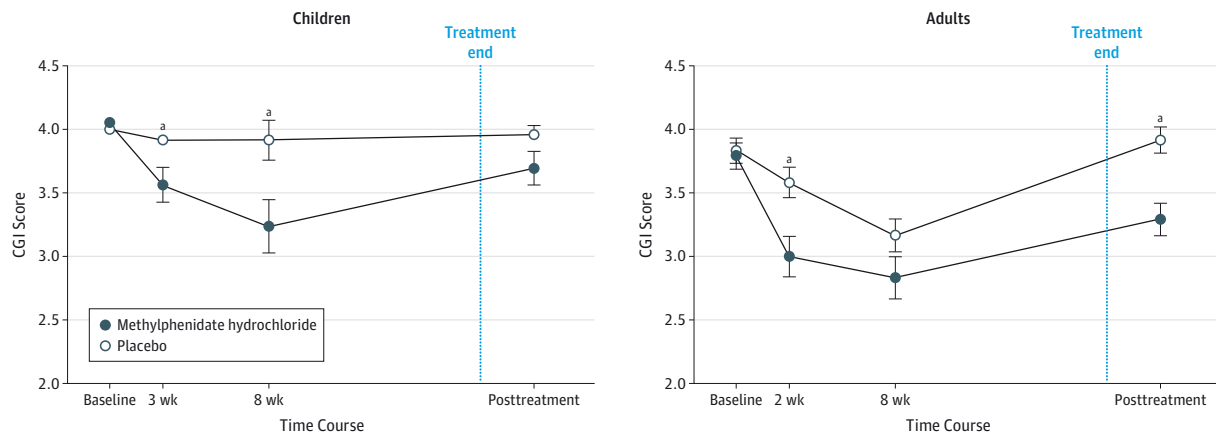
Table 2. Cerebral Blood Flow (CBF) Response to Dopamine Challenge^a

Δi CBF	Children	P Value ^b	η_p^2 Value	Adults	P Value ^b	η_p^2 Value
	Mean Difference (95% CI), mL/100 g/min (n = 50)			Mean Difference (95% CI), mL/100 g/min (n = 48)		
Striatum	7.7 (0.7 to 14.8)	.03	0.09	-0.2 (-4.6 to 4.1)	.92	<0.01
Thalamus	7.5 (-2.1 to 17.1)	.12	0.05	-2.1 (-10.2 to 5.9)	.60	<0.01
Anterior cingulate cortex	4.9 (-2.9 to 12.7)	.22	0.03	-2.3 (-7.5 to 3.0)	.39	0.02

^a Shown are differences between treatment groups in individual CBF response to methylphenidate hydrochloride from pretreatment to posttreatment acute CBF response (Δi CBF).

^b By independent t test.

Figure 3. Treatment Effects on Global Clinical Impairment in the Methylphenidate and Placebo Groups



Shown are the means (SEMs) for Clinical Global Impression (CGI) scores at baseline, week 3, week 8, and posttreatment (week 17). In children, we found a significant difference between treatment groups in the change from baseline to week 3 ($P = .03$) and week 8 ($P = .005$) but not at week 17 ($P = .06$). In contrast,

in adults, we found a significant time \times treatment interaction at week 3 ($P = .01$) and week 17 ($P = .01$) but not at week 8 ($P = .20$).

^a $P < .05$ comparing treatment groups on individual time points (by t test).

in adults this difference was only significant at week 3 ($P = .01$, $\eta_p^2 = 0.14$) and week 17 ($P = .01$, $\eta_p^2 = 0.14$). On the Clinical Global Impression-Improvement scale, the proportion of patients who reported feeling “much improved” or “very much improved” (compared with baseline) 1 week after the end of

the trial was significantly higher for the methylphenidate condition relative to the placebo condition in adult patients but not in children. The values in adults were 62.5% (15 of 24) for the methylphenidate group vs 8.3% (2 of 24) for the placebo group (odds ratio, 18.33; $P < .001$). The values in children were

12.0% (3 of 25) for the methylphenidate group vs 0% (0 of 25) for the placebo group (odds ratio, 7.93; $P = .24$).

Discussion

We studied whether age modulates the effects of prolonged methylphenidate treatment on the human DAergic system. After 4 months of methylphenidate treatment, we found significant increases in the CBF response to a DA challenge in the striatum and thalamus 1 week after the end of the trial in treatment-naive children, suggesting lasting changes in the DAergic system. This effect was specific to children because placebo treatment failed to show such an effect in either age group, and active treatment with methylphenidate in adults had no effect either. In contrast, methylphenidate induced persistent clinical improvement in adults but not in children.

Our finding that methylphenidate treatment induces persistent increases in the CBF response to an acute challenge with methylphenidate in children is in line with preclinical pHMRI investigations that report long-lasting increases in regional CBF in several DA-rich brain regions in juvenile rats treated with methylphenidate.¹⁴ Similarly, more invasive techniques have demonstrated that long-term methylphenidate treatment with clinically relevant doses causes long-lasting reductions in striatal DA transporters,²⁴ expression of D₃ receptors in the prefrontal cortex,¹⁴ increased DA levels,²⁵ and a reduction in prefrontal neuronal excitability and synaptic transmission⁶ in juvenile (but not adult) rats. In humans, structural MRI studies^{26,27} have shown that stimulant treatment affects brain maturation, such that untreated children with ADHD show more rapid cortical thinning and smaller white matter volumes than children with ADHD receiving stimulant medication. Several positron emission tomographic investigations have compared on-medication and off-medication conditions in children and adults with ADHD. They showed mostly reductions in the CBF when off medication in motor and anterior cingulate cortices,²⁸ somatosensory cortices,²⁹ striatum,²⁹ and parietal areas³⁰ in children. However, in adults, decreases were seen in precentral gyri and striatum but increased CBF in the vermis.³¹ In addition, an arterial spin labeling-based study³² reported reduced frontal and striatal perfusion in adults receiving ADHD medication. These findings are in line with our exploratory voxelwise analyses that showed reduced CBF after methylphenidate challenge (eFigure 4 in Supplement 1).

Preclinical evidence suggests that our present findings are mediated, in part, by changes in the expression of cortical D₃ receptors. For example, juvenile exposure to methylphenidate induced a long-lasting decrease in D₃ receptor messenger RNA in the medial prefrontal cortex.³³ In rats, D₃ receptor expression is high during early adolescence and then wanes until becoming absent in adulthood. Reduced D₃ receptor autoregulation after early methylphenidate treatment causes DA levels to rise, which subsequently increases activity at other DA receptors. The D₂ and D₃ receptors have the highest affinity for DA. However, as extracellular DA levels increase, more binding to D₁ occurs, inducing increases in the hemodynamic response.¹⁴

Because ADHD is associated with DA hypofunction,² a lasting increase in DA neurotransmission—as evidenced by increased CBF values in response to an acute challenge with methylphenidate (which we found in methylphenidate-treated children only)—will likely result in positive effects on the clinical condition. However, this finding was not the case in the children in our cohort, with the positive effect of methylphenidate on clinical assessment during the trial waning after drug clearance. In contrast, adults in the methylphenidate group showed clinical improvement after washout, but there was no response difference in the placebo group at week 8, which is probably owing to the large placebo response as a result of coaching. Despite limited evidence for cognitive interventions in children,³⁴ coaching has shown to be beneficial in adult ADHD both with and without additional pharmacological treatment.³⁵⁻³⁸ Nevertheless, it cannot be excluded that pharmacological treatment is less robust in adults than in children, and this hypothesis warrants further research.

Because maturation of several brain regions is not complete until adolescence,³⁹ drugs given during the sensitive early phases of life may affect neurodevelopmental trajectories that can have more profound effects later in life.²⁴ Indeed, the most comprehensive trial on the long-term effects of ADHD, the Multimodal Treatment Study of Children With ADHD,¹ reported that 6 years after enrollment, medication management was associated with a transient increase in the prevalence of anxiety and depression.⁴⁰ This finding is in line with animal studies that reported increased anxiety and depression scores in juvenile methylphenidate-treated rats⁴¹ and memory impairments.⁴² In addition, cohort investigations have provided evidence for age-dependent effects. For example, adult ADHD is associated with a high rate of substance abuse,⁴³ but ADHD stimulant medication use in childhood does not increase this risk^{44,45} and may even decrease such vulnerability.⁴⁶

A major strength of the present study is its design, such that the effects of confounders (eg, age and sex) are small. We chose to include only male patients to limit participant variation because girls and boys differ considerably in brain growth patterns³⁹ and because ADHD is most prevalent in male individuals.¹⁵ The selective inclusion of stimulant treatment-naive patients was also critical for addressing our objective. Ideally, we would have used a longer washout period because the effects of drug exposure on the developing brain are hypothesized to be only fully expressed during early adulthood,^{5,24} and the present results indicate that such follow-up studies are warranted. However, for ethical reasons, the time that a child would not receive adequate treatment (placebo condition) dictated the length of this randomized clinical trial because the waiting list for treatment in the Netherlands was typically 4 months.

Our study had limitations. Owing to its complexity, the power of the study was limited, especially because we examined 3 different brain regions, which could have increased the risk of a type I error. Hence, our findings need to be replicated using a larger sample size with more statistical power. In addition, it is likely that the effects of methylphenidate are not

confined to the regions of interest studied but likely affect DAergic projections throughout the brain, including other cortical regions.

Another potential weakness is that—despite its advantages and sensitivity, as discussed above—phMRI remains an indirect measure of DA function. It specifically assesses the hemodynamic response as a proxy of neurotransmission, and physiological effects could affect the hemodynamic response. For example, HRs differ between children and adults.⁴⁷ Although acute methylphenidate administration increased HR, it occurred in both children and adults. Moreover, we found no **age × treatment interaction at baseline**, nor did methylphenidate treatment significantly alter HR in either age group (eFigure 5 in Supplement 1). Therefore, although we did not find evidence for systemic vascular effects (eFigure 6 in Supplement 1), we cannot fully disentangle DA neurotransmission from direct effects of DA on the microvasculature.⁴⁸

Another potential limitation is baseline differences in the CBF between children and adults. However, additional analyses assessing changes in relative CBF provided similar results (eAppendix in Supplement 1). Therefore, it is unlikely that the differences between children and adults are attributable to differences in HR or global CBF. Furthermore, previous studies have shown that time-course changes in the phMRI signal

closely parallel microdialysis measurements of striatal DA release²¹ and correlate well with positron emission tomographic and single-photon emission computed tomographic measurements of DA transporter availability,¹² DA release,¹³ and behavioral measures of DA dysfunction.^{12,13} Pharmacological MRI investigations in rats⁵ further report data similar to the present findings. This collective evidence indicates that phMRI is ideally suited to noninvasively study methylphenidate effects in children.

Conclusions

In line with extensive preclinical data, we provide the first evidence, to our knowledge, that methylphenidate treatment during a specific period of maturation alters the CBF response, likely reflecting increased DA neurotransmission due to neurochemical imprinting by methylphenidate. In the short term, these alterations do not induce major benefits or harm regarding clinical improvement, but the long-term consequences remain to be established. Therefore, our data stress the need for **longer follow-up studies** that address possibly progressive disturbances of the DAergic system and associated behavioral abnormalities.

ARTICLE INFORMATION

Accepted for Publication: May 23, 2016.

Published Online: August 3, 2016.

doi:10.1001/jamapsychiatry.2016.1572.

Author Affiliations: Department of Radiology, Academic Medical Center, University of Amsterdam, Amsterdam, the Netherlands (Schrantee, Tamminga, Bouziane, Bottelier, Mutsaerts, Reneman); Brain Imaging Center, Academic Medical Center, University of Amsterdam, Amsterdam, the Netherlands (Schrantee, Bouziane, Mutsaerts, Reneman); Amsterdam Brain and Cognition, University of Amsterdam, Amsterdam, the Netherlands (Schrantee, Reneman); d'Arc (Dutch Autism and Attention-Deficit/Hyperactivity Disorder Research Center), Department of Brain and Cognition, University of Amsterdam, Amsterdam, the Netherlands (Tamminga, Geurts); Department of Child and Adolescent Psychiatry, Triversum, Alkmaar, the Netherlands (Bottelier); Biomedical Imaging Group Rotterdam, Department of Medical Informatics, Erasmus Medical Center, Rotterdam, the Netherlands (Bron, Klein, Niessen); Biomedical Imaging Group Rotterdam, Department of Radiology, Erasmus MC, Rotterdam, the Netherlands (Bron); Department of Clinical Epidemiology and Biostatistics, Academic Medical Center, University of Amsterdam, Amsterdam, the Netherlands (Zwinderman); Institute of Psychology, Department of Social Sciences, University of Oslo, Oslo, Norway (Groote); Institute of Psychology, Leiden University, Leiden, the Netherlands (Rombouts); Department of Radiology, Leids Universitair Medisch Centrum, Leiden, the Netherlands (Rombouts); Department of Child and Adolescent Psychiatry, Academic Medical Center, University of Amsterdam, Amsterdam, the Netherlands (Lindauer, Boer); De Bascule Academic Center for Child and Adolescent Psychiatry,

Amsterdam, the Netherlands (Lindauer, Boer); Department of Imaging Physics, Faculty of Applied Sciences, Delft University of Technology, Delft, the Netherlands (Niessen); Clinical Research Unit, Academic Medical Center, University of Amsterdam, Amsterdam, the Netherlands (Opmeer); Swammerdam Institute for Life Sciences, Center for Neuroscience, University of Amsterdam, Amsterdam, the Netherlands (Lucassen); Department of Psychiatry, Harvard Medical School and McLean Hospital, Belmont, Massachusetts (Andersen).

Author Contributions: Ms Schrantee and Dr Reneman had full access to all the data in the study and take responsibility for the integrity of the data and the accuracy of the data analysis. *Study concept and design:* Lindauer, Boer, Geurts, Reneman.

Acquisition, analysis, or interpretation of data: Schrantee, Tamminga, Bouziane, Bottelier, Bron, Mutsaerts, Zwinderman, Groote, Rombouts, Klein, Niessen, Opmeer, Lucassen, Andersen. *Drafting of the manuscript:* All authors. *Administrative, technical, or material support:* All authors.

Conflict of Interest Disclosures: Dr Niessen reported being cofounder, shareholder, and part-time scientific officer of Quantib BV. No other disclosures were reported.

Funding/Support: This trial was funded by faculty resources of the Academic Medical Center, University of Amsterdam, and by grant 11.32050.26 from the European Research Area Network Priority Medicines for Children (Sixth Framework Programme). Dr Rombouts was supported by Vici (Netherlands Organisation for Scientific Research), and Dr Andersen was supported by grant DA-015403 from the National Institute on Drug Abuse.

Role of the Funder/Sponsor: The funding sources had no role in the design and conduct of the study; collection, management, analysis, and interpretation of the data; preparation, review, or approval of the manuscript; and decision to submit the manuscript for publication.

REFERENCES

- MTA Cooperative Group. A 14-month randomized clinical trial of treatment strategies for attention-deficit/hyperactivity disorder: Multimodal Treatment Study of Children With ADHD. *Arch Gen Psychiatry*. 1999;56(12):1073-1086.
- Volkow ND, Wang GJ, Tomasi D, et al. Methylphenidate-elicited dopamine increases in ventral striatum are associated with long-term symptom improvement in adults with attention deficit hyperactivity disorder. *J Neurosci*. 2012;32(3):841-849.
- van de Loo-Neus GH, Rommelse N, Buitelaar JK. To stop or not to stop? how long should medication treatment of attention-deficit hyperactivity disorder be extended? *Eur Neuropsychopharmacol*. 2011;21(8):584-599.
- Volkow ND, Insel TR. What are the long-term effects of methylphenidate treatment? *Biol Psychiatry*. 2003;54(12):1307-1309.
- Andersen SL, Navalta CP. Altering the course of neurodevelopment: a framework for understanding the enduring effects of psychotropic drugs. *Int J Dev Neurosci*. 2004;22(5-6):423-440.
- Urban KR, Waterhouse BD, Gao WJ. Distinct age-dependent effects of methylphenidate on developing and adult prefrontal neurons. *Biol Psychiatry*. 2012;72(10):880-888.
- Bourgeois FT, Kim JM, Mandl KD. Pre-market safety and efficacy studies for ADHD medications in children. *PLoS One*. 2014;9(7):e102249. doi:10.1371/journal.pone.0102249.

8. Elder TE. The importance of relative standards in ADHD diagnoses: evidence based on exact birth dates. *J Health Econ*. 2010;29(5):641-656.
9. Center for Drug Evaluation and Research. Medical review: Focalin XR. Silver Spring, MD: US Food and Drug Administration; 2004.
10. National Institutes of Health Consensus Development Conference Statement: diagnosis and treatment of attention-deficit/hyperactivity disorder (ADHD). *J Am Acad Child Adolesc Psychiatry*. 2000;39(2):182-193.
11. Committee for Medicinal Products for Human Use. *Guideline on the Clinical Investigation of Medicinal Products for the Treatment of Attention Deficit Hyperactivity Disorder*. London, England: European Medicines Agency; 2008.
12. Jenkins BG, Sanchez-Pernaute R, Brownell AL, Chen YCI, Isacson O. Mapping dopamine function in primates using pharmacologic magnetic resonance imaging. *J Neurosci*. 2004;24(43):9553-9560.
13. Schrantee A, Václavů L, Hejtl DFR, et al. Dopaminergic system dysfunction in recreational dexamphetamine users. *Neuropsychopharmacology*. 2015;40(5):1172-1180.
14. Andersen SL, Napierata L, Brenhouse HC, Sonntag KC. Juvenile methylphenidate modulates reward-related behaviors and cerebral blood flow by decreasing cortical D₃ receptors. *Eur J Neurosci*. 2008;27(11):2962-2972.
15. Bottelier MA, Schouw ML, Klomp A, et al. The Effects of Psychotropic Drugs on Developing Brain (ePOD) study: methods and design. *BMC Psychiatry*. 2014;14:48.
16. American Psychiatric Association. *Diagnostic and Statistical Manual of Mental Health Disorders*. 4th ed. Washington, DC: American Psychiatric Association; 1994.
17. Ferdinand RF, van der Ende J. *NIMH DISC-IV: Diagnostic Interview Schedule for Children [in Dutch]*. Rotterdam, the Netherlands: Erasmus MC-Sophia; 2000.
18. Kooij JJS, Francken MM. Diagnostic Interview for ADHA in Adults (DIVA). http://www.divacenter.eu/Content/VertalingPDFs/DIVA_2_EN_FORM%20-%20in%20vulbaar.pdf. Published 2010. Accessed June 30, 2016.
19. Jenkins BG. Pharmacologic magnetic resonance imaging (phMRI): imaging drug action in the brain. *Neuroimage*. 2012;62(2):1072-1085.
20. Schouw ML, Caan MW, Geurts HM, et al. Monoaminergic dysfunction in recreational users of dexamphetamine. *Eur Neuropsychopharmacol*. 2013;23(11):1491-1502.
21. Chen YC, Galpern WR, Brownell AL, et al. Detection of dopaminergic neurotransmitter activity using pharmacologic MRI: correlation with PET, microdialysis, and behavioral data. *Magn Reson Med*. 1997;38(3):389-398.
22. Swanson JM, Volkow ND. Serum and brain concentrations of methylphenidate: implications for use and abuse. *Neurosci Biobehav Rev*. 2003;27(7):615-621.
23. Guy W. The Clinical Global Impression-Severity and -Improvement scales. In: *ECDEU Assessment Manual for Psychopharmacology*. Washington, DC: US Dept of Health, Education, and Welfare; 1976:218-222. DHEW publication ADM 76-338.
24. Moll GH, Hause S, Rüter E, Rothenberger A, Huether G. Early methylphenidate administration to young rats causes a persistent reduction in the density of striatal dopamine transporters. *J Child Adolesc Psychopharmacol*. 2001;11(1):15-24.
25. Jezierski G, Zehle S, Bock J, Braun K, Gruss M. Early stress and chronic methylphenidate cross-sensitize dopaminergic responses in the adolescent medial prefrontal cortex and nucleus accumbens. *J Neurochem*. 2007;103(6):2234-2244.
26. Shaw P, Sharp WS, Morrison M, et al. Psychostimulant treatment and the developing cortex in attention deficit hyperactivity disorder. *Am J Psychiatry*. 2009;166(1):58-63.
27. Castellanos FX, Lee PP, Sharp W, et al. Developmental trajectories of brain volume abnormalities in children and adolescents with attention-deficit/hyperactivity disorder. *JAMA*. 2002;288(14):1740-1748.
28. Langleben DD, Acton PD, Austin G, et al. Effects of methylphenidate discontinuation on cerebral blood flow in prepubescent boys with attention deficit hyperactivity disorder. *J Nucl Med*. 2002;43(12):1624-1629.
29. Lee JS, Kim BN, Kang E, et al. Regional cerebral blood flow in children with attention deficit hyperactivity disorder: comparison before and after methylphenidate treatment. *Hum Brain Mapp*. 2005;24(3):157-164.
30. Szobot CM, Ketzler C, Cunha RD, et al. The acute effect of methylphenidate on cerebral blood flow in boys with attention-deficit/hyperactivity disorder. *Eur J Nucl Med Mol Imaging*. 2003;30(3):423-426.
31. Schweitzer JB, Lee DO, Hanford RB, et al. A positron emission tomography study of methylphenidate in adults with ADHD: alterations in resting blood flow and predicting treatment response. *Neuropsychopharmacology*. 2003;28(5):967-973.
32. O'Gorman RL, Mehta MA, Asherson P, et al. Increased cerebral perfusion in adult attention deficit hyperactivity disorder is normalised by stimulant treatment: a non-invasive MRI pilot study. *Neuroimage*. 2008;42(1):36-41.
33. Andersen SL, Sonntag KC. Juvenile methylphenidate reduces prefrontal cortex plasticity via D₃ receptor and BDNF in adulthood. *Front Synaptic Neurosci*. 2014;6:1-8.
34. Sonuga-Barke EJS, Brandeis D, Cortese S, et al; European ADHD Guidelines Group. Nonpharmacological interventions for ADHD: systematic review and meta-analyses of randomized controlled trials of dietary and psychological treatments. *Am J Psychiatry*. 2013;170(3):275-289.
35. Philipsen A, Jans T, Graf E, et al; Comparison of Methylphenidate and Psychotherapy in Adult ADHD Study (COMPAS) Consortium. Effects of group psychotherapy, individual counseling, methylphenidate, and placebo in the treatment of adult attention-deficit/hyperactivity disorder: a randomized clinical trial. *JAMA Psychiatry*. 2015;72(12):1199-1210.
36. Emilsson B, Gudjonsson G, Sigurdsson JF, et al. Cognitive behaviour therapy in medication-treated adults with ADHD and persistent symptoms: a randomized controlled trial. *BMC Psychiatry*. 2011;11:116.
37. Weiss M, Murray C, Wasdell M, Greenfield B, Giles L, Hechtman L. A randomized controlled trial of CBT therapy for adults with ADHD with and without medication. *BMC Psychiatry*. 2012;12:30.
38. Safren SA, Sprich S, Mimiaga MJ, et al. Cognitive behavioral therapy vs relaxation with educational support for medication-treated adults with ADHD and persistent symptoms: a randomized controlled trial. *JAMA*. 2010;304(8):875-880.
39. Giedd JN, Blumenthal J, Jeffries NO, et al. Brain development during childhood and adolescence: a longitudinal MRI study. *Nat Neurosci*. 1999;2(10):861-863.
40. Molina BS, Hinshaw SP, Swanson JM, et al; MTA Cooperative Group. The MTA at 8 years: prospective follow-up of children treated for combined-type ADHD in a multisite study. *J Am Acad Child Adolesc Psychiatry*. 2009;48(5):484-500.
41. Carlezon WA Jr, Mague SD, Andersen SL. Enduring behavioral effects of early exposure to methylphenidate in rats. *Biol Psychiatry*. 2003;54(12):1330-1337.
42. LeBlanc-Duchin D, Taukulis HK. Chronic oral methylphenidate administration to periadolescent rats yields prolonged impairment of memory for objects. *Neurobiol Learn Mem*. 2007;88(3):312-320.
43. Dalsgaard S, Mortensen PB, Frydenberg M, Thomsen PH. ADHD, stimulant treatment in childhood and subsequent substance abuse in adulthood: a naturalistic long-term follow-up study. *Addict Behav*. 2014;39(1):325-328.
44. Molina BS, Hinshaw SP, Eugene Arnold L, et al; MTA Cooperative Group. Adolescent substance use in the multimodal treatment study of attention-deficit/hyperactivity disorder (ADHD) (MTA) as a function of childhood ADHD, random assignment to childhood treatments, and subsequent medication. *J Am Acad Child Adolesc Psychiatry*. 2013;52(3):250-263.
45. Humphreys KL, Eng T, Lee SS. Stimulant medication and substance use outcomes: a meta-analysis. *JAMA Psychiatry*. 2013;70(7):740-749.
46. Spencer TJ, Wilens TE, Biederman J, Weisler RH, Read SC, Pratt R. Efficacy and safety of mixed amphetamine salts extended release (Adderall XR) in the management of attention-deficit/hyperactivity disorder in adolescent patients: a 4-week, randomized, double-blind, placebo-controlled, parallel-group study. *Clin Ther*. 2006;28(2):266-279.
47. Christou DD, Seals DR. Decreased maximal heart rate with aging is related to reduced β -adrenergic responsiveness but is largely explained by a reduction in intrinsic heart rate. *J Appl Physiol* (1985). 2008;105(1):24-29.
48. Choi JK, Chen YI, Hamel E, Jenkins BG. Brain hemodynamic changes mediated by dopamine receptors: role of the cerebral microvasculature in dopamine-mediated neurovascular coupling. *Neuroimage*. 2006;30(3):700-712.